

LIEMKE



LIEMKE

LEADING IN IMAGE QUALITY

CATALOG 2023

INNOVATION. QUALITY. SERVICE.
by LIEMKE 

FASCINATION THERMAL IMAGING



Dear customers,

A lot has changed! We are particularly pleased to have launched our new LUCHS and KEILER devices – premium products that are second to none. Whether clip-on optics or pocket-size hand-held units – all LUCHS and KEILER devices are developed and made in Germany.

And of course one thing will never change: our service promise. If you have to send your LIEMKE device to us for repair, we will return your optics within ten working days. In addition to this, we offer up to three years of warranty on all our products.

We thank you for your trust and wish you Waidmannsheil!

Your LIEMKE team

WHY LIEMKE?

WE OFFER INNOVATIVE THERMAL IMAGING DEVICES WITH LEADING IMAGE QUALITY!



1 PERFECT DEFINITION

excellent image sharpness

2 LONG BATTERY LIFE

with integrated and replaceable batteries

3 PRECISION

clip-on devices with maximum repeat accuracy

4 PRACTICAL

simple operation and intuitive menus

5 PIECE-OF-MIND SERVICE

up to 3 years of warranty and service in Germany

ADVANTAGES OF THERMAL IMAGING

WHY IS IT WORTH BUYING A THERMAL IMAGING DEVICE? FOUR GOOD REASONS FOR THIS TECHNOLOGY:

1 OVERVIEW

Reliable identification even at dusk/dawn or at night.

2 WIDE VIEW

Fast detection of game – even at greater distances.

3 INTUITIVE

Simple operation, low weight, and a robust housing.

4 RELIABLE

Ensures that no game is roused, even during your approach to the blind.

REALITY

WHITE HOT MODE

RED HOT MODE

ADVANTAGES



THERMAL IMAGING OPTICS RECOMMENDATIONS FOR USE

Detection ranges

FOREST

FOREST / FIELD

FIELD

CLIP-ON DEVICE

LUCHS-2 (forest / field)

2,500 m

LUCHS-1 (forest / field)

1,750 m

MERLIN-13 (forest)

650 m

HAND-HELD DEVICE

KEILER-2 (forest / field)

2,500 m

KEILER-1 (forest / field)

1,750 m

CHALLENGER-35 (forest / field)

1,235 m

CHALLENGER-15 (forest)

530 m

THERMAL SCOPE

SPERBER-1 (forest / field)

1,750 m



0 – 800 m

800 – 1,600 m

1,600 – 2,500 m



LUCHS FAMILY

LUCHS-1

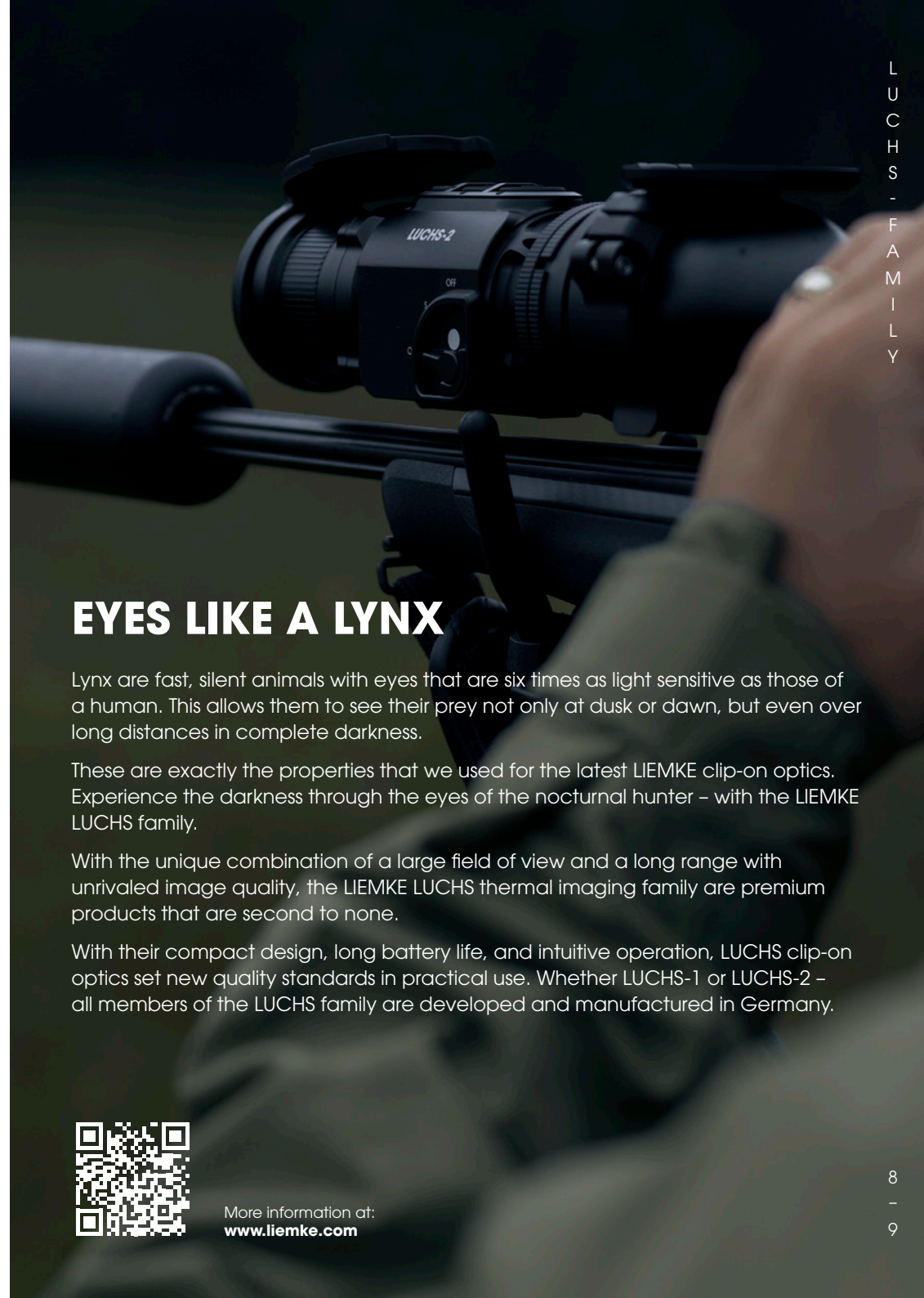


LUCHS-2

NEW



MADE IN
GERMANY



EYES LIKE A LYNX

Lynx are fast, silent animals with eyes that are six times as light sensitive as those of a human. This allows them to see their prey not only at dusk or dawn, but even over long distances in complete darkness.

These are exactly the properties that we used for the latest LIEMKE clip-on optics. Experience the darkness through the eyes of the nocturnal hunter – with the LIEMKE LUCHS family.

With the unique combination of a large field of view and a long range with unrivaled image quality, the LIEMKE LUCHS thermal imaging family are premium products that are second to none.

With their compact design, long battery life, and intuitive operation, LUCHS clip-on optics set new quality standards in practical use. Whether LUCHS-1 or LUCHS-2 – all members of the LUCHS family are developed and manufactured in Germany.



More information at:
www.liemke.com

THE LUCHS-FAMILY

MADE IN
GERMANY

VERSATILE APPLICATION OPTIONS

The LUCHS-1 with a 35 mm lens – the universal genius from the LUCHS family – works in perfect synergy with a universal or driven-hunt rifle scope. The LUCHS-2 with a 50 mm lens is the long-distance specialist and is ideal for use with a rifle scope with 2.5x to 3x magnification. The perfect combination of a powerful sensor and the matching lens for maximum precision in field and forest – to suit your hunt!

FAST & INTUITIVE OPERATION

The LIEMKE LUCHS family features flexible operation with three modes:

Standard: preset

Basis: limited to essential functions

Individual: configurable for tech-savvy users

Memory slots are available for adapting the settings to three different weapons / optics.

THREE-POSITION SWITCH

With a start-up time of only 5 seconds, the device is ready to use immediately. The easily visible and tactile mechanical switch ensures fast and intuitive operation – directly on the mounted weapon: OFF / standby / ON



STAYING POWER

Both LUCHS models feature an integrated battery with a life of up to 9 hours.

MULTIMEDIA CONNECTIVITY

With a USB-C port and WiFi functionality for live streaming and photo and video recording via an app. A 32 GB internal memory additionally allows you to record your hunting experience.



WiFi



Photos



Videos



Live streaming

32

GB memory



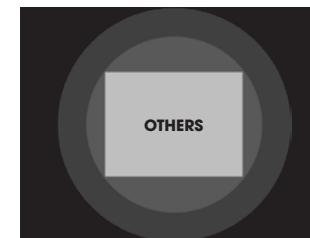
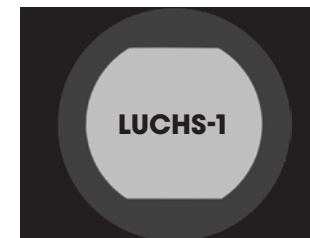
USB-C

DURABLE DESIGN

The LUCHS models are designed and then tested to ensure that they meet the same requirements for impact resistance as premium rifle scopes. The clip-on optics can also handle rain, dust, and temperatures between -20 °C and +50 °C with ease.

POWERFUL COMBINATION

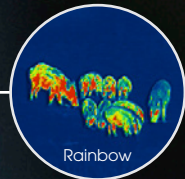
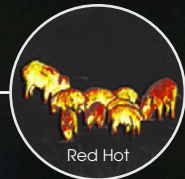
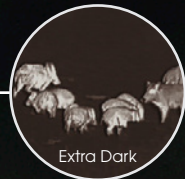
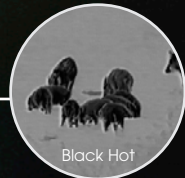
The combination of field of view and range make the devices from the LUCHS family suitable for different areas of application: The LUCHS-1 features a unique and extremely powerful combination of a generous field of view of 22 m over 100 m and a range of 1,750 m. This means that the image width of the rifle scope is completely filled even at low magnification. The LUCHS-2, on the other hand, is the model variant for maximum range (2,500 m) with a field of view of 15.4 m.



Better overview: In contrast to clip-on devices from other manufacturers, the LUCHS-1 completely fills the rifle scope image even at low magnification (approx. 2x).

SUPERIOR IMAGE QUALITY

The five color modes allow you to use the devices in all conditions, to suit your individual preferences. The two image modes "Sun" and "Rain" use contrast balancing to ensure optimum detailed image rendition in different weather conditions, providing orientation on any terrain. Applies to the thermal imaging devices from the LUCHS and KEILER families.



COLOR MODES

Choose from five different color modes – to suit your requirements!

- White Hot:** for precise identification of the target at night – the target appears lighter, while the background is dark.
- Black Hot:** provides an image that is similar to daylight, with a dark target against a light background.
- Extra Dark:** based on white-hot mode with low overall brightness and a warmer tint, ideal for protecting the natural night-vision abilities of the human eye.
- Red Hot:** for particularly fast detection of heat sources.
- Rainbow:** displays even the smallest temperature differences.

If you want to use only two or three color modes, it can be annoying having to scroll through all modes every time. Simply deactivate unused color modes in the submenu and then easily toggle between your favorites.

IMAGE MODES

Different scenarios can have different contrast parameters. It is not possible to use a single setting on the device to achieve optimum detail rendering in a high-contrast setting and also in a low-contrast setting, e.g. in rain.

Rather than making a poor compromise or requiring extensive adjustments to sharpness and contrast in the menu, the LUCHS and KEILER devices are equipped with two image modes for optimum detail rendering in different weather conditions:

- Sun:** for scenes with high contrast during warm, sunny weather and to distinguish the details of the warm target particularly well.
- Rain:** for cloudy and rainy weather, makes fine structures of the landscape visible to allow particularly good orientation in the terrain.

As for the color modes, you can adapt the selection of image modes to your individual requirements.

A GOOD VIEW AT NIGHT!



FIELD OF VIEW AND RANGE LUCHS-1 / LUCHS-2



LUCHS-1 (forest/field)

1,750 m

LUCHS-1: The all-rounder in the premium segment with 35 mm lens and 22 m field of view.

LUCHS-2 (forest/field)

2,500 m

LUCHS-2: The distance specialist in the premium segment with 50 mm lens and a 15.4 m field of view.

NEW

MODEL	LUCHS-1	LUCHS-2
Sensor (resolution and type)	640x512 VOx microbolometer, uncooled	
Pixel pitch	12 μm	
Pixel field of view (PFOV)	0.34 mrad	0.24 mrad
Lens	35 mm / f1.0	50 mm / f1.0
Field of view	22 x 17.6 m / 100 m	15.4 x 12.3 m / 100 m
Detection range	1,750 m	2,500 m
Optical magnification	1x (2x direct zoom available)	
Refresh rate	50 Hz	
NETD	50 mK	
Display	1.024 x 768 OLED color display	
Battery	integrated, up to 9 hours battery life	
External power supply	USB-C	
Wireless connection / memory	WiFi / 32 GB internal memory	
Connecting thread	M43 x 0.75	
Waterproof rating	IP67	
Usage temperature	-20°C to +50°C	
Size	161 x 64 x 65 mm	171 x 64 x 65 mm
Weight	580 g	625 g

MERLIN-13

MULTIFUNCTIONAL CLIP-ON DEVICE



Ultra-compact and lightweight - perfect for bait and forest hunters.

The MERLIN-13 is equipped with a 256x192 pixel ceramic VOx detector with 12 µm pixel pitch and even better temperature sensitivity. In combination with the 1024x768 OLED display, this results in good definition and excellent imaging power.

The lens with a diameter of 13 mm provides a very wide field of view of 24 m over 100 m and a detection range of up to 650 m.

The extremely compact design weighs only 130 g and sets new standards for thermal imaging optics. It can be used as a hand-held thermal imaging device or as a clip-on device on daytime optics.

The robust housing allows a simple and intuitive operation, even with gloves. Certified to IP67 and therefore protected against dust and water.



MERLIN-13
(forest)

MODEL	MERLIN-13
Main use	forest
Lens	13
Detector material	VOx ceramic
Detector resolution	256 x 192 pixels
Detection range	650 m
Pixel pitch	12 µm
Shutter/calibration	auto/manual
Display resolution	1.024 x 768 pixels
Optical magnification	1
Focus	fixed
Battery (RCR123, 3.7 V)	3.5 h
Field of view width	24 x 17.7 m / 100 m
Pixel POV	0.92 mrad
Weight	130 g
External USB power supply	yes
Warranty	3 years



NEW **KEILER**
FAMILY

KEILER-1



KEILER-2



MADE IN
GERMANY

POCKET-SIZED
TOP PERFORMANCE

The premium hand-held devices from LIEMKE – small and compact

The KEILER family combines maximum image quality and very easy handling. With their small size, they can easily be carried in a coat pocket, yet they can take on their larger siblings in terms of performance at any time. The KEILER-1 is a universal all-rounder in the premium segments, while the KEILER-2 shines as the long-distance specialist for a wide range of applications. The sophisticated image processing software and two quick-toggle imaging modes provide a natural image that shows even the smallest details very clearly. The high-contrast display offers a large brightness range. Comfortable observations during the day and at night with maximum precision, in a pocket size!



More information at:
www.liemke.com

KEILER-FAMILY NEW

MADE IN
GERMANY

FLEXIBLE USE WITH EITHER HAND

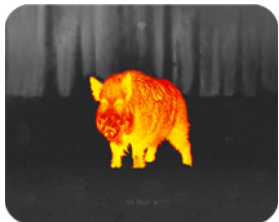
For a secure grip: The hand strap allows the device to be handled securely and easily with either the right or left hand, while also serving as an attachment point for the neck strap. Ready for any hunting situation!

COMPACT AND ROBUST

Only the best: robust aluminum for the lens, ocular unit and frame, a fiberglass-reinforced plastic body and rubber inserts allow you to use the device even in the most adverse of conditions. It can even handle brief immersion in water!*

*30 min at 1 m water depth

BRILLIANT IMAGE



A brilliant image with a high-resolution 640x512 pixel 12µm VOx sensor. The sophisticated image processing software and the two quick-toggle image modes for different observation conditions provide a natural image with very good detail rendering, even in different weather conditions. With the five color modes, you can adapt the device to your personal preferences.

More details on color and image modes on pages 12 / 13.



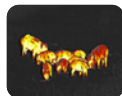
White Hot



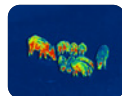
Black Hot



Extra Dark



Red Hot



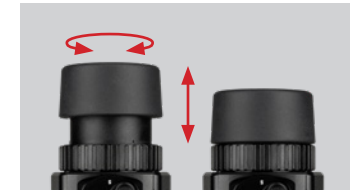
Rainbow



Image shows the KEILER-1 with a 35 mm lens.

COMFORTABLE - ALSO FOR WEARERS OF GLASSES

Keep an overview at all times: The eyecup can be adjusted for use with and without spectacles - with the full field of view. Another benefit: Unrestricted observation is possible even in difficult situations because there is no set distance to the eye.



ENDURING, REPLACEABLE BATTERY

The device battery lasts for up to nine hours and can be recharged with the fast charging function in just three hours through the USB-C port. The battery can be changed quickly and silently thanks to the bayonet mount. Added benefit: The CHARGER-K (available as an accessory) can also be used as a power bank!



MULTIMEDIA CONNECTIVITY

The hand-held devices from the KEILER family can easily be connected to the LIEMKE app using the WiFi function. Photos and videos can also be stored easily to preserve your hunting memories for later on!



WiFi



Photos



Videos



Live streaming

32

GB memory



USB-C

INTUITIVE OPERATION AND INDIVIDUAL ADJUSTMENTS

The central scroll wheel is the main control element for intuitive operation of the menu, zoom, and other functions. Customizable: The menu structure with standard, custom, and basic mode and the quick-access menu offer fast access to frequently used functions. The excellent tactile design allows you to locate all important buttons intuitively, even in complete darkness. Get ready: After switching on, the device is ready to use in just five seconds!



Photo- / video button

Function button

Scroll wheel

Menu button

Off- / Standby- / On button



On



Standby



Off

SEEING FAR IN FIELD AND FOREST

NEW



KEILER-1 (forest / field)

1,750 m

KEILER-1: The all-rounder in the premium segment with 35 mm lens and 22 m field of view.

KEILER-2 (forest / field)

2,500 m

KEILER-2: The distance specialist in the premium segment with 50 mm lens and a 15.4 m field of view.

NEW

NEW

MODEL	KEILER-1	KEILER-2
Detector and optics		
Lens	35 mm f/1.0	50 mm f/1.1
Field of view	22×17.6 m/100 m	15.4×12.3 m/100 m
Resolution and type	640×512 VOx	
Pixel pitch	12 μm	
Pixel field of view (PFOV)	0.34 mrad	0.24 mrad
Detection range	1,750 m	2,500 m
Refresh rate	50 Hz	
NETD	50 mK	
Magnification	1.9x basic magnification (digital zoom up to 10.0x)	2.7x basic magnification (digital zoom up to 14.0x)
Focusing range	1 m to infinite	
Display	1024×768 px OLED	
Functions and media		
Internal memory	32 GB	
WiFi and app compatibility	yes	
Battery life	up to 9 h	
Physical and environmental characteristics		
Size	158×72×47 mm	163×75×56 mm
Weight	465 g	510 g
Waterproof rating	IP67 (dust-tight / water-tight for brief immersion)	
Operating / storage temperature	-20 °C to +50 °C / -40 °C to +70 °C	

CHALLENGER- FAMILY

POWERFUL HUNTING COMPANIONS



The CHALLENGER devices impress with an unbeatable price / performance ratio. These hand-held devices are a proven and robust alternative to the KEILER scopes.

The CHALLENGER family was developed specifically for use in hunting and is the ideal entry-level model for the world of thermal imaging.



CHALLENGER-15
(forest)



CHALLENGER-35
(forest / field)

MODEL	CHALLENGER-15	CHALLENGER-35
Main use	forest	forest / field
Lens	15	35
Detector material	VOx	VOx
Detector resolution	384 x 288 pixels	384 x 288 pixels
Detection range	530 m	1,235 m
Pixel pitch	17 µm	17 µm
Shutter/calibration	auto / manual	auto / manual
Display resolution	720 x 560 pixels	1,024 x 768 pixels
Optical magnification	1.5	2.5
Focus	auto / manual	auto / manual
Digital zoom	2 / 4x	2 / 4x
Field of view	25 x 18°	11 x 8°
Field of view width	44 x 32.6 m / 100 m	19 x 14 m / 100 m
Pixel POV	1.1 mrad	0.5 mrad
Weight	270 g	510 g
Recording function	yes	yes
WiFi live	yes	yes

SPERBER

FOR DEMANDING USE IN FOREST
AND FIELD AT ANY DISTANCE



The LIEMKE SPERBER-1 thermal scope sets new standards in terms of design. In contrast to the other models in the SPERBER series, the SPERBER-1 stands out on account of its aluminum housing in classic day-scope style.

Despite its slim design, the device features a detection range of 1,750 m and excellent image quality. With a field of view of 13.2 m over 100 m, the device is suitable for hunting in both forest and field.



SPERBER-1
(forest / field)

MODEL	SPERBER-1
Sensor	384 × 288 12 μm VOx
Lens	35 mm f/1.0
Magnification	3–12x
Field of view	13.2 × 9.9 m / 100 m
Detection range	1,750 m
Refresh rate	50 Hz
NETD	50 mK
Display	1,280 × 960 LCOS color display
Eye relief	61 mm
Dioptic adjustment	±4 dpt
Battery life	up to 15 hours (with additional exchangeable 18500 battery)
External power supply	USB-C
Wireless connection / memory	Wifi / 16 GB internal memory
Mounting interface	30 mm ring interface
Waterproof rating	IP67
Dimensions	376 × 85 × 67 mm
Weight	940 g

LIEMKE MULTIRAIL



COMPACT

With an overall length of only 335 mm, the combination of the BRAVO3 and LUCHS-1 is approximately as long as a conventional riflescope without an attachment.

The LIEMKE Multirail with the SIG SAUER BRAVO3 rifle scope and LIEMKE clip-on device offers a unique compact solution for night-time hunting.

With the LUCHS-1 in particular, this combination can show its full strength. The field of view of the BRAVO3 is more than 30% larger than on conventional rifle scopes and is completely filled by the thermal image of the LUCHS-1. At 335 mm, the combination is substantially shorter than other solutions and the clip-on device can be removed at any time using the quick-connect fitting.



LIEMKE Multirail Blaser with SIG SAUER BRAVO3 and LUCHS-1

30% LARGER FIELD OF VIEW

The field of view of the BRAVO3 is more than 30% larger than on conventional rifle scopes and is completely filled by the thermal image of the LUCHS-1.



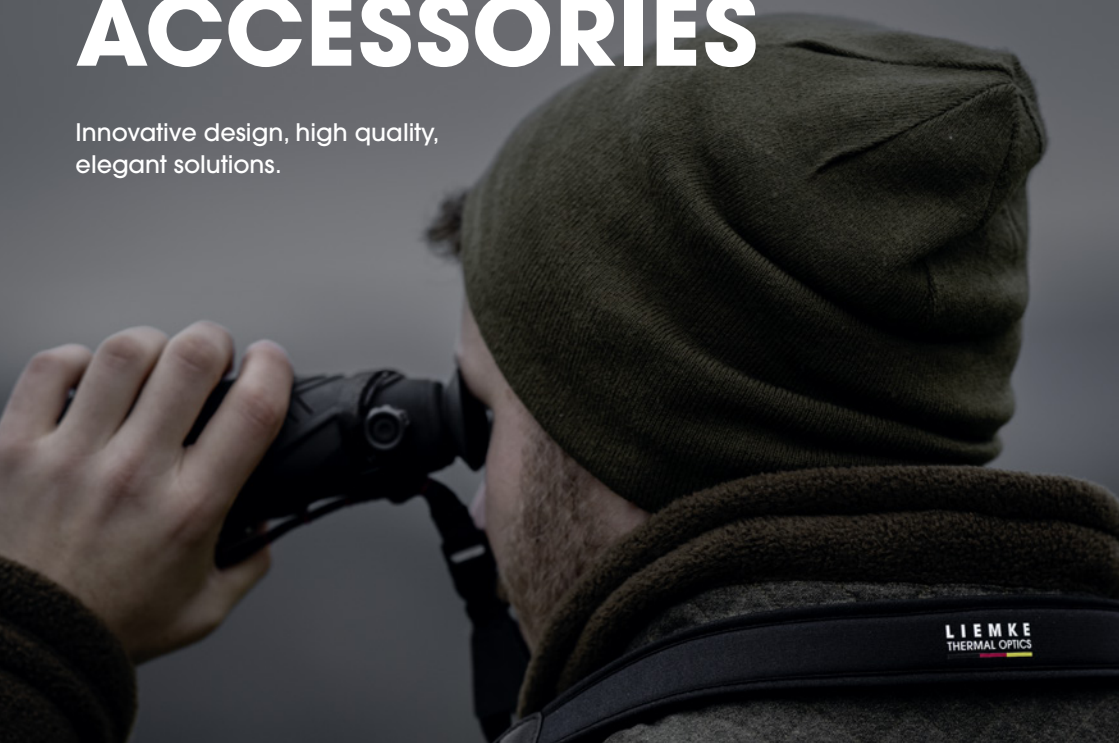
LIEMKE Multirail Picatinny with SIG SAUER BRAVO3 and LUCHS-1

100% REPEAT ACCURACY

The LIEMKE Multirail Blaser can be removed and attached quickly with maximum repeat accuracy. The connector on the clip-on device allows comfortable use of the thermal device for observation.

LIEMKE ACCESSORIES

Innovative design, high quality,
elegant solutions.



CHARGER-K FOR THE KEILER FAMILY

Charger for two BP-K Li-ion batteries with
power bank function



Batteries not
included.



BP-K LI-ION BATTERY

For the KEILER family,
with bayonet mount

FLIP COVER KEILER-1 /-2

Lens cap with
screw-in adapter ring



LIEMKE CARRYING STRAP

Made of neoprene, cushioned, black or
orange



BLASER CLIP-ON MOUNTS

A reliable connection between the device and the rifle scope is key for obtaining a consistent point of impact when hunting with a thermal imaging clip-on device.

The BL clip-on mounts available for the Blaser driven-hunt rifle scopes (Blaser B1 1-7x28 iC and Blaser B2 1-6x24 iC S) with inner rail are very easy to operate. The highest level of repeat accuracy is ensured, even when the clip-on device is attached and detached and removed frequently.

The Blaser clip-on mounts BL 30 (M30x1 thread), BL 43 (M43x0.75 thread), and BL 52 (M52x0.75 thread) are predestined for the LIEMKE thermal imaging clip-on devices MERLIN-13 and LUCHS.



LIEMKE CLAMPING ADAPTER

The LIEMKE clamping adapter KA-MC was developed specifically for the use of thermal imaging clip-on devices on day scopes.

The adapter is very thin and can be used for precise and stable clamping of clip-on devices onto day scopes. The wide, rubber-coated inside of the adapter ensures secure seating while protecting the coating of the day scopes.

The clamping adapter KA-MC is available in sizes from 30 to 65 mm.



LIEMKE FFL LUCHS

The FFL (Fast Focus Lever) LUCHS makes focusing with your LUCHS thermal imaging device much easier, without having to grasp the entire lens. The stops ensure that you always remain within the practical focal range.





LIEMKE GmbH & Co. KG

Ziegelstadel 1
D-88316 Isny
Germany

+49 (0) 7562 6189472
office@liemke.com
www.liemke.com

INNOVATION. QUALITY. SERVICE.
by LIEMKE

We reserve the right to make changes in construction or design.
No guarantee for possible errors.

Stand: 2023 © LIEMKE GmbH & Co. KG

Please be aware of the legal conditions of purchase and
use for thermal imaging optics in your country or state.